

Wenatchee Medical, Dental & Behavioral Providers



[Rachel Bollens, CNM](#)
Wenatchee Medical, Dental,



[Jamie Boykin, CNM](#)
Wenatchee Medical, Dental,



[Nicholas Collins-Feay, PA-C](#)
Wenatchee Medical, Dental,



[Eliza Cooley, WHNP/CNM](#)
Wenatchee Medical, Dental,



[Erin Cudney, ARNP](#)
Wenatchee Medical, Dental,



[Anna Edelman, Ph.D.](#)
Wenatchee Medical, Dental,



[Isabel Garcia, RDH](#)
Wenatchee Medical, Dental,



[Hessine Gayle, ARNP](#)
Wenatchee Medical, Dental,



[Hannah Harrison, LMHC-A](#)
Wenatchee Medical, Dental,
& Behavioral



[Christine Heller, Ph.D.](#)
Wenatchee Medical, Dental,
& Behavioral



[Leslie Hite, ARNP, PMHNP-BC](#)
East Wenatchee Medical &
Dental Clinic, Wenatchee
Medical, Dental, & Behavioral



[Sauna Hornby, MD](#)
Wenatchee Medical, Dental,
& Behavioral



[Courtney Jones, MA, QMHP](#)
Wenatchee Medical, Dental,
& Behavioral



[Katy Joslin, MD](#)
Wenatchee Medical, Dental,
& Behavioral



[Peter Keyser, MD](#)
Wenatchee Medical, Dental,
& Behavioral



[Shelley Lisk, PA-C](#)
Wenatchee Medical, Dental,
& Behavioral



[Vivian Lockett, APRN,
PMHNP-BC](#)
Wenatchee Medical, Dental,
& Behavioral



[Rebecca Rose \(Beckett\)
Matylinski, MSN, ARNP, NP-
C, FNP-BC](#)
Wenatchee Medical, Dental,
& Behavioral



[Alyssa Mayer, LMHC-A](#)
Wenatchee Medical, Dental,
& Behavioral



[Anna Ramirez, DDS](#)
Wenatchee Medical, Dental,
& Behavioral



[Melissa Reilly, PSYD](#)
Wenatchee Medical, Dental,
& Behavioral



[Nathan Schreiber, DO](#)
Wenatchee Medical, Dental,
& Behavioral



[Ken Shermer, MD](#)
Wenatchee Medical, Dental,
& Behavioral



[Kelsey Shumate, DNP,
ARNP, PMHNP-BC](#)
Wenatchee Medical, Dental,
& Behavioral



[Leah Spigelman, MS,
LMHCA](#)
Wenatchee Medical, Dental,
& Behavioral



[Katie Stapleton, LMHC-A](#)
Wenatchee Medical, Dental,
& Behavioral



[Peter Steadman, DMD](#)
Wenatchee Medical, Dental,
& Behavioral



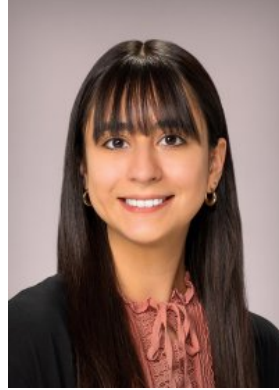
[Micah Vacatio, MSW,
LICSW](#)
Wenatchee Medical, Dental,
& Behavioral



[Lindsey Waters, RDH](#)
Wenatchee Medical, Dental,
& Behavioral



[Misha L. Whitfield, PSYD](#)
Wenatchee Medical, Dental,
& Behavioral



[Sara Zare, LMHC-A](#)
Wenatchee Medical, Dental,
& Behavioral