

East Wenatchee Medical Providers



[AnnMarie Batdorf, PsyD,
LMHC](#)

East Wenatchee Medical &
Dental Clinic



[Lorena Boyd, ARNP](#)

East Wenatchee Medical &
Dental Clinic



[Rhonda Breckenridge,
LICSW, Therapist](#)

East Wenatchee Medical &
Dental Clinic



[Liz Buck, MD](#)

East Wenatchee Medical &
Dental Clinic



[Malcolm Butler, MD](#)

East Wenatchee Medical &
Dental Clinic



[Daniel Buzzell, PA-C](#)

East Wenatchee Medical &
Dental Clinic



[Thomas Em, DDS](#)

East Wenatchee Medical &
Dental Clinic



[Sophia Gill, MD](#)

East Wenatchee Medical &
Dental Clinic



[Felipe N. Gutierrez M.D.,
MPH](#)

East Wenatchee Medical &
Dental Clinic



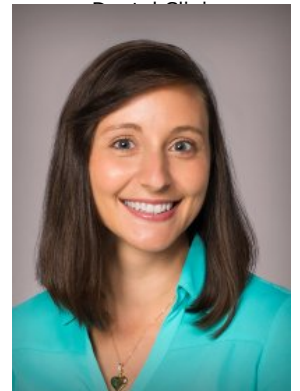
[Leslie Hite, ARNP, PMHNP-
BC](#)

East Wenatchee Medical &
Dental Clinic, Wenatchee
Medical, Dental, & Behavioral



[Cici Kamphaus, RDH](#)

East Wenatchee Medical &
Dental Clinic



[Sarah MacKay, MD, MHS](#)

East Wenatchee Medical &
Dental Clinic



[Dayci Patterson, PA-C,
MPAS](#)
East Wenatchee Medical &
Dental Clinic



[Lindsey Tanaka, DO](#)
East Wenatchee Medical &
Dental Clinic



[Martha von Reis, ARNP](#)
East Wenatchee Medical &
Dental Clinic



[Allie Walsh, PA-C](#)
East Wenatchee Medical &
Dental Clinic



[Christine Young, CPNP](#)
East Wenatchee Medical &
Dental Clinic